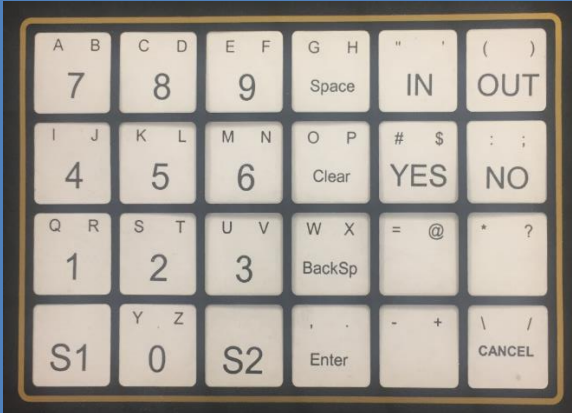
 <p><b>ET-315</b> Remote Swipe Card Reader</p>		<p><b>Note:</b></p> <p>If you make a mistake or if you get a bad reading please set the device back to the defaults and start over.</p> <p>The steps are simple and can be found at the end of this article.</p>
---	---	--

*S1 & S2 + Cancel will reboot the reader.*  
*S1 and S2 are also used to add characters.*  
*EXAMPLES: Holding down S2 and pressing the Enter key generates a dot. Holding down S1 and pressing Enter generates a comma.*

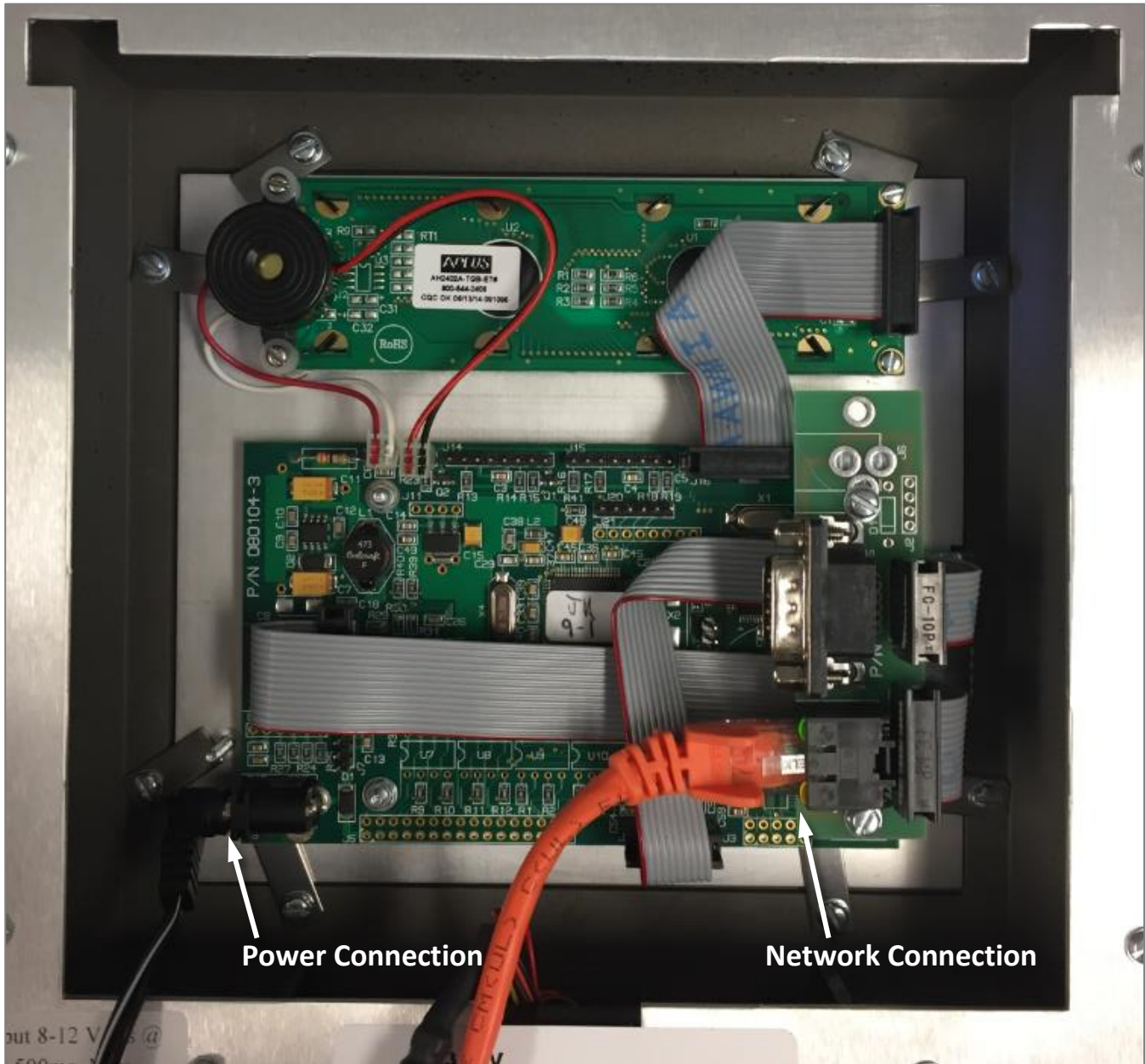
## Connecting the Swipe Card Reader to Power & to the Network

1. Place the reader upside down and loosen the two screws holding the curved tabs.



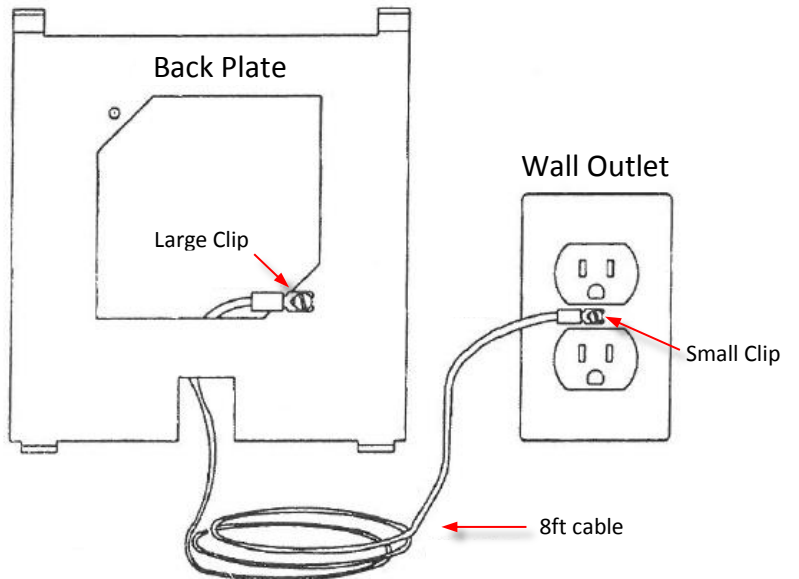
2. Lift up the metal plate at the tabs and then slide-out the metal plate entirely.

3. Plug in the power and network cables. When connected to power, it will beep 3 times.



4. Connect the ground wire as shown.

Alternatively, you could leave the back plate off and attach the grounding wire to another screw in the metal flange that remains.



# Initial Setup of the Remote Swipe Card Reader

## Part One: Network Configuration

**Note:** Please jot down the IP address of the device. You'll need it later when connecting to the Time Clock Remote app.

**CAUTION!** Do not get distracted by what is not written below. Simply follow the steps as presented.

1. OFFLINE should display. *If you see Date and Time, disconnect the Time Clock Remote app.*
2. While pressing **S1** and **S2** at the same time, press **IN**. The device will beep once.
3. You will see **NETWORK CONFIGURATION**.
4. Press **2** and you will see **MYIP** on the 1<sup>st</sup> line of the screen, *which may disappear*.
5. Press **Clear** and the content of the second line will disappear.
6. Enter the IP address of the Reader. *To generate a dot, hold down **S2** and press **Enter**.*
7. Press **Enter** and then press **Clear**.
8. Enter your Subnet Mask and press **Enter**. **GATEWAY** will appear on screen.
9. Do not enter the gateway. Press **Enter** repeatedly until MODE appears onscreen.
10. Press **Clear** to delete the **1** on the second line and press **2**.
11. Press **Enter** twice and you'll see **Reset (7=YES)** on the screen.
12. Press **7** to save your entries. The device will beep 3 times and display **OFFLINE**.

## Part Two: Console Configuration

1. While pressing **S1** and **S2** at the same time, press **OUT**. The device will beep once.
2. With **CONSOLE CONFIGURATION** on the screen, press **2**.
3. Press **Enter** until you get to **MAGSTRIPE**.
4. Press **Clear** to delete the number **5** and type-in **133**.
5. Press **Enter** repeatedly until you see Reset (7=YES). *...For Gradience, 7 actually means **SAVE**.*
6. Press **7** to save your entries. The device will display **OFFLINE**.

## Part Three: Connecting the Device to Gradience TimeClock Remote

1. Open Gradience TimeClock Remote. Typically this is at the server but not necessarily.  
*On 1<sup>st</sup> time connection, click **File** and **New Terminal** and enter **Terminal Name**. (the location of the reader)*
2. Verify **Terminal Type** as **Computerwise ET214 (8X40 Display)** ...even though you have an ET-315.
3. Verify the IP address of the Reader and verify that the **Port** is **1070**.
4. Check **Connect at Startup** and click **Save**.
5. Click **Connect** and you'll see...

**Connecting to Terminal** followed by...

**Terminal Connected.**

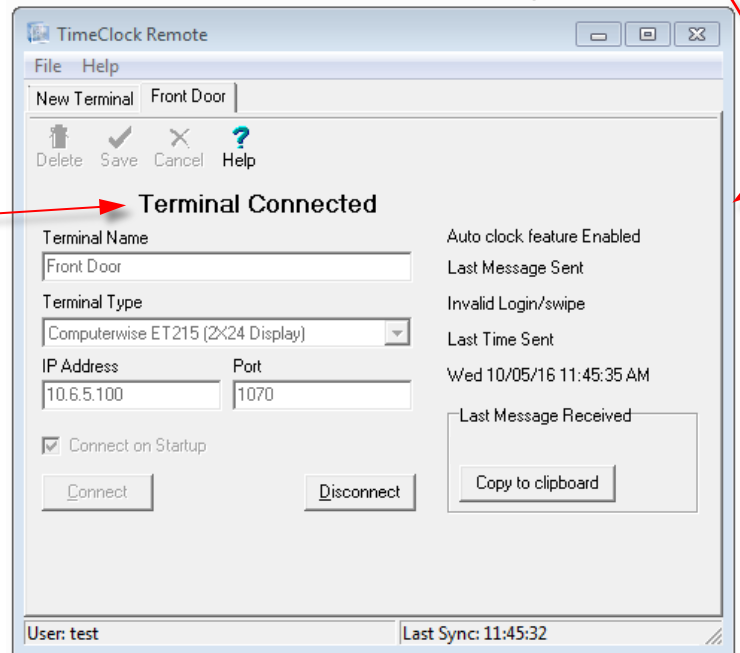
### NOTE:

*If TimeClock Remote continues to indicate*

**Terminal Not Connected**, do the following...

1. Set the device back to the defaults.
2. Unplug the power cable for 60 seconds.
3. Reconnect the power cable.
4. Start again at step 2 under Network Configuration on page 3.

*Example of Success*



## Setting the Device Back to the Defaults

1. While pressing **S1** and **S2** at the same time, press **IN**.
2. Press **1** and then press **Enter** and then Press **7**. The device will beep 3 times.
3. While pressing **S1** and **S2** at the same time, press **OUT**.
4. Press **1** and then press **Enter** and then Press **7**. The device will beep 3 times.

The device will display **OFFLINE**.

*If you encounter difficulty, contact Gradience Tech Support at [www.gradiencesupport.com](http://www.gradiencesupport.com) and click on **Submit a Request**.*